

AMP16

PeriFlo[®] AMP Series

AMP16 — a real workhorse of a general-purpose pump.

Like all Pulsafeeder peristaltic pumps, the AMP16 is ideally suited for water and wastewater treatment, petrochemical and mining industries — including polymers and slurries.



Applications

Metering, batching, transfer and sampling



Flow

to 112 gph (426 lph)



Pressure

to 115 psi (7.9 bar)



Temperature

Product to 176° F (80° C)
Ambient to 104° F (40° C)



Peristaltic pumps deliver more than you expect

Simple operating design

The simple design of a PeriFlo[®] pump results in a pump that is valveless and sealless (creating a gentle pumping action), has reversible rotation, high suction lift, higher solids content handling ability and easy maintenance.

Variety of Media

Thanks to its gentle pumping action, a peristaltic pump can handle a variety of media where other technologies are unsuccessful, including chemicals, slurries, viscous, abrasive or shear sensitive media such as polymers.

Pump Longer

The simple design means there are no valves to change and no seals to replace. The hose or tube element is the common wear part and is easy to replace. This means **less** down-time, **less** spare parts inventory and **more** pumping.

Specifications

Max capacity	0.022 gal/rev
Max flow rate	112 gph (426 lph)
Connections	3/4" MNPT, 3/4" Camlock
Compressor	Rollers
Max tube pressure	30 psi (2 bar)
Max hose pressure	115 psi (7.9 bar)

Features & Benefits

- Sealless and Valveless
- Close coupled
- Abrasion resistant
- Dry-run capable
- Self priming to 27 ft.
- Reversible rotation
- Easy maintenance

Materials of Construction

Hose: Natural rubber, Buna, EPDM

Tube: Norprene

Connections: Male NPT: PVC or stainless steel as standard;
Optional: Male NPT PVDF or Camlock PVC

Casing: Powder coated aluminum

Rotor: Black oxide steel

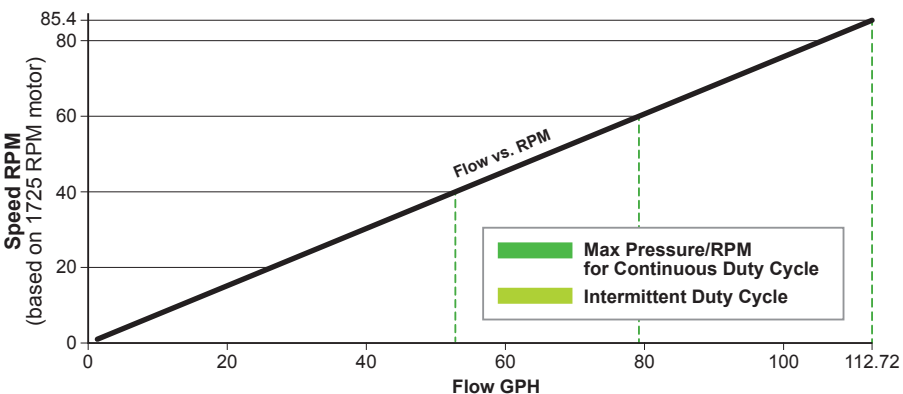
Rollers: Black oxide steel

Hardware: Stainless steel

Drives & Accessories

- Variable speed controls with industry standard I/O's
- Tube/Hose leak detection
- Pulsation dampeners
- Suction accumulators
- Pressure relief valves

Performance

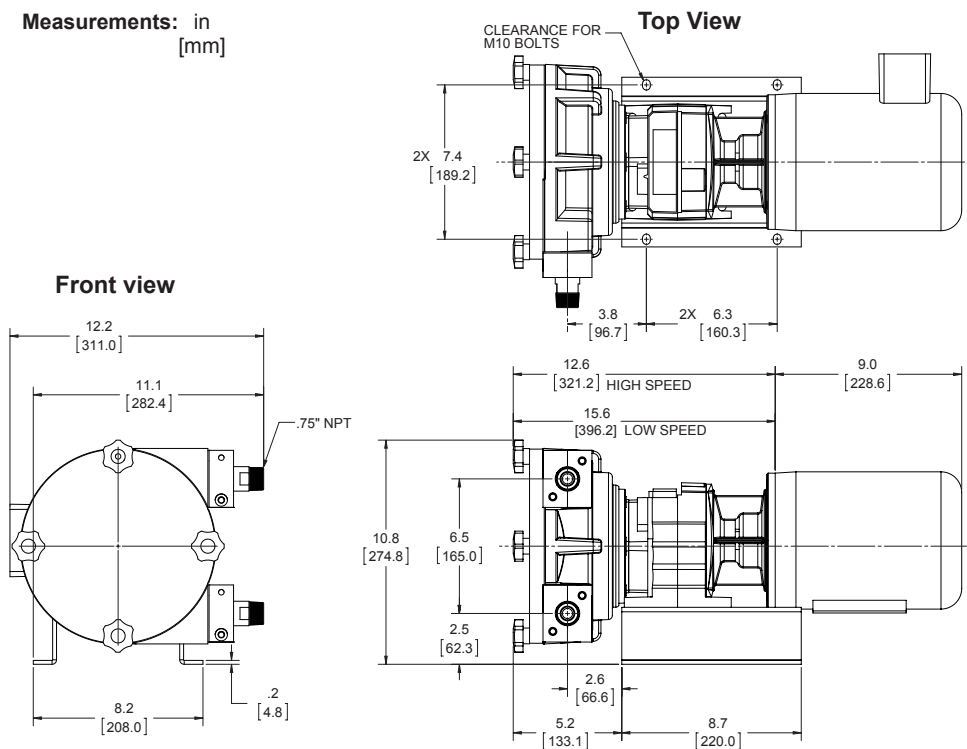


30 PSI / 85.4 RPM	60 PSI / 69.0 RPM	60 PSI / 85.4 RPM
115 PSI / 42.8 RPM	115 PSI / 69.0 RPM	

Note: Continuous Duty = run time greater than 2 hours
Intermittent Duty = run time less than 2 hours with a 1 hour rest period between run times

Dimensions

Measurements: in [mm]



AMP16 Weight (with standard motor): 70 lbs.

Side View



Pulsafeeder Engineered Products

A Unit of IDEX Corporation

2883 Brighton Henrietta TL Rd • Rochester, NY 14623

Phone: +1 (585) 292-8000 • pulsa@idexcorp.com

pulsa.com



Spec Pulsafeeder.
Get more than you expect.

© Copyright 2014 Pulsafeeder. All Rights Reserved.

PFAMP16spec_Rev0314