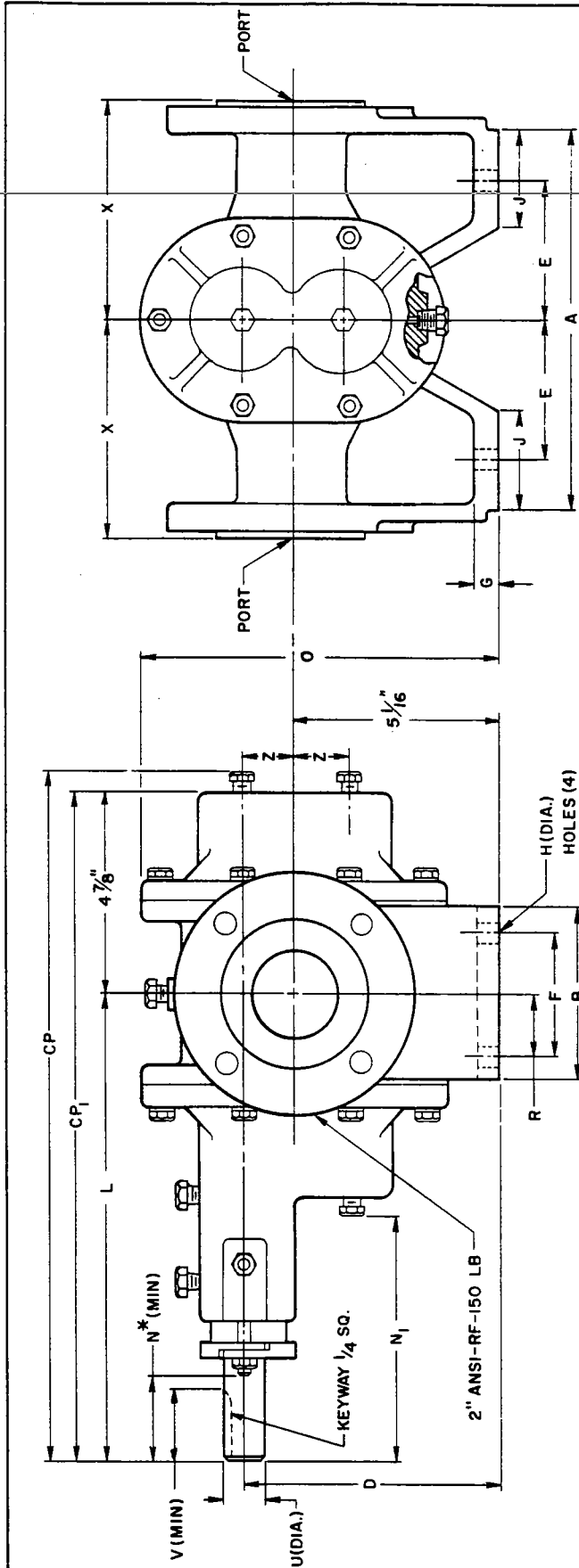




# OUTLINE — BARE PUMP

SECTION G-16 PAGE 16204  
 DATE 7/19/82  
 SUPERCEDES NONE



NOTE: SUCTION AND DISCHARGE PORTS DEPENDENT UPON DIRECTION OF ROTATION.

PORTS	DIMENSIONS																	
	INCHES / MM																	
A	B	CP	CP <sub>1</sub>	D	E	F	G	H	J	L	N*	N <sub>1</sub>	O	R	U	V	X	Z
9 3/8	4 3/8	17 1/2	17 1/8	6 1/4	3 1/4	3 1/2	5/8	1 1/32	2 1/2	12 1/4	3 1/4	7	8 3/4	1 3/4	1	2	5 1/4	1 3/16
238.1	111.1	444.5	434.9	158.7	82.6	88.9	15.8	13.5	63.5	311.1	82.6	177.8	222.2	44.4	25.4	50.8	33.3	30.1

\* 3 3/8 (85.7 MM) WITH MECHANICALLY SEALED PUMPS

ECO PUMP CORPORATION SOUTH PLAINFIELD, N.J. U.S.A.	
G16 SERIES-FLANGED UNMOUNTED PUMP	
CUSTOMER _____	P.O. NO. _____
ECO ORDER NO. _____	ITEM NO. _____
CERTIFIED BY _____	DATE _____
DWN BY: _____	DATE: 6/5/81
SD-2534	